



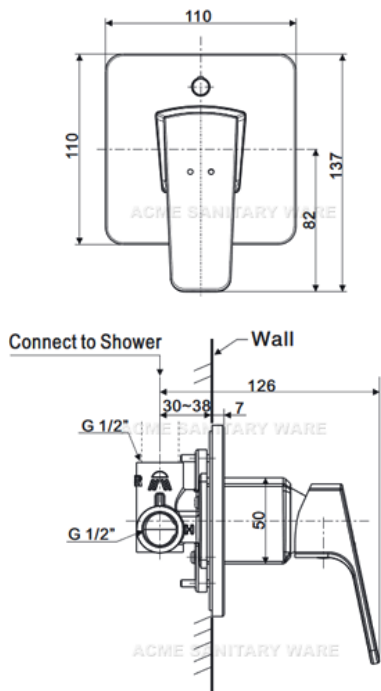
**Acme Sanitary Ware Co Ltd**

Acme Building, 22-28 Nanking Street, Kowloon, Hong Kong  
Tel: 2388 7171 Fax: 2710 8012  
E-mail: acme@acmesanitary.com.hk  
Website: www.acmesanitaryware.com.hk

**American  
Standard**

PROJECT		REF		REV	ITEM CODE	
LOCATION		DATE			PAGE	

**SANITARY WARE SPECIFICATION SHEET**

Item Descriptions	American Standard (PRC) "Concept" concealed chrome plated shower mixer	Illustration/ Drawing
Dimensions	L126 x W110 x H137 mm	
Model	CF-0422.709.50	
Finish	Chrome Plated	
Manufacturer	American Standard (PRC)	
Source	Acme Sanitary Ware Co. Ltd Mr. Eric Wong / Mr. Wilson Hung	
Contact Tel/Fax	(852) 2388-7171 / (852) 2710-8012	
E-mail	acme@acmesanitary.com.hk	
Website	www.acmesanitary.com.hk	
		

**Note:**

Same product but different model no: WF-0422.709.50/ F10422-CHACT500B

*\* All information of the above is for reference only. No prior notice is made if any changes.*



水務署  
Water Services Department



總部 Headquarters

香港灣仔告士打道 48 樓

48/F, Immigration Tower, 7 Gloucester Road, Wan Chai, Hong Kong

本署檔號 : ( 2 ) in WSD 3321/18 Pt.1 T/J(620)  
Our ref.  
來函檔號 :  
Your ref.

電話 :  
Tel.  
傳真 : 2824 0578  
Fax.

12 July 2018

### Approval of "AMERICAN STANDARD" Shower Mixers (General Acceptance No. C20180399)

Your letter ref. WRC/1807 dated 1 June 2018 refers.

Having considered the test report ref. J22968 issued on 29 May 2018 by Nutek Systems (HK) Ltd., this Authority accepts that the fittings described below comply with, and their use when correctly installed does not contravene, the Waterworks Ordinance and Regulations.

**Name of Manufacturer:** American Standard

**Country of Origin:** China

**Brand:** American Standard

**Details of Fitting:** 1/2" Concealed single lever shower mixer

**Model:** CF-0422.709.50  
WF-0422.709.50

**Body Markings:** *American Standard*

**Expiry Date:** 25 April 2023

This Authority hereby permits the use of the above fittings in fresh water plumbing systems subject to full adherence to Waterworks installation requirements. In particular, you are required to draw your customers' attention to the following requirement-

"The cold water supply to the fittings shall be drawn from the same source that supplies the hot water apparatus so as to provide a balanced pressure and to obviate the risk of scalding in the event of a restriction or failure in the water supply." AND

"The shower head or handspray should not be placed in submerged conditions and should be securely fixed to the original position after use."

A condition of this acceptance is that the fittings to be installed shall be replicas of the samples as certified by the testing agent mentioned above and without modifications. This acceptance may be withdrawn at any time if the standard of the fittings installed fails to meet that of the approved samples or if the fittings are found to be unsuitable for use in fresh water plumbing systems.

This acceptance is only applicable to the main body of the fittings, unless other specified.

For the use of the fittings in any project, the General Acceptance Number of this letter must be quoted as a means of identification of acceptance of the fittings by this Authority.

Should you have any enquiries, please contact our Engineer Mr. Terry KUNG at tel. no. 3583 4086.

Yours faithfully,



(CHAN Chung-kun)

for Director of Water Supplies

Encl.

c.c.     WSD 3321/1/82    ] - without catalogue  
         ME/MC            ] - with soft copy only

## CONCEPT SQUARE

WF-0421.609.50  
Concealed B&S Control Valve

WF-0422.709.50  
Concealed Shower Control Valve

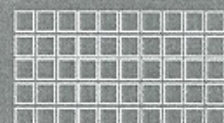


WF-0421.609.50



WF-0422.709.50

*American Standard*



Installation &  
Operation Instructions

*Thank you for selecting American-Standard - the benchmark of fine quality for over 100 years.  
To ensure that your installation proceeds smoothly--please read these instructions carefully before you begin.*

\* American Standard always keep raising and improving the product design and performance, and reserve the right to modify the dimension and specification. At this case, we will not inform you separately.

\* This installation instruction sheet is for your reference only, the dimension and specification is subject to the actual products.

All instruction procedures must comply in strict accordance with applicable local plumbing and building codes

### Pre-Installation Checks

- \* Remove all impurity in pipes before beginning to avoid clogging. Connect faucet pipes correctly. Make sure the cold water hose is connected to the right side and the hot water hose to the left.
- \* Check installation distances in the Dimension diagram to ensure correct installation.

### Conditions for use

- \* Recommended water pressure condition: 0.1~0.5Mpa.
- \* Environment Temperature: 1~55°C
- \* Steam is not allowed to use.
- \* The cold and hot water pipes must not be reserved.

When in the process of installation, grab the whole body. Do not grab handle only.

### Recommended Tools and Materials



Adjustable Wrench



Level



Screwdriver



Tape Measure



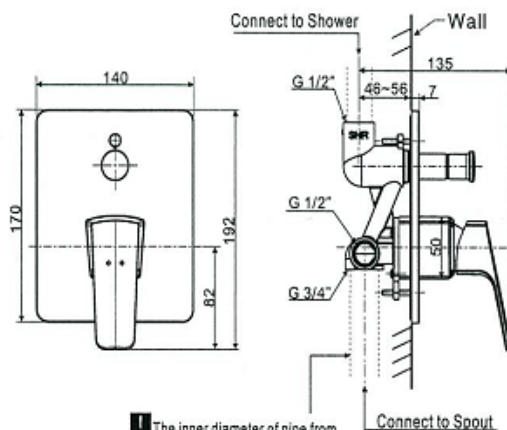
windtight swathe



Pencil

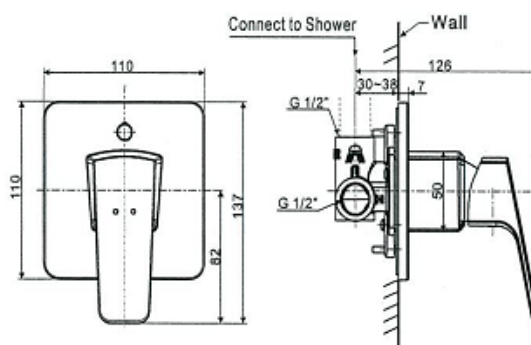
### Dimension

(WF-0421.609.50)



! The inner diameter of pipe from body to spout (including connector) need to be more than 13mm

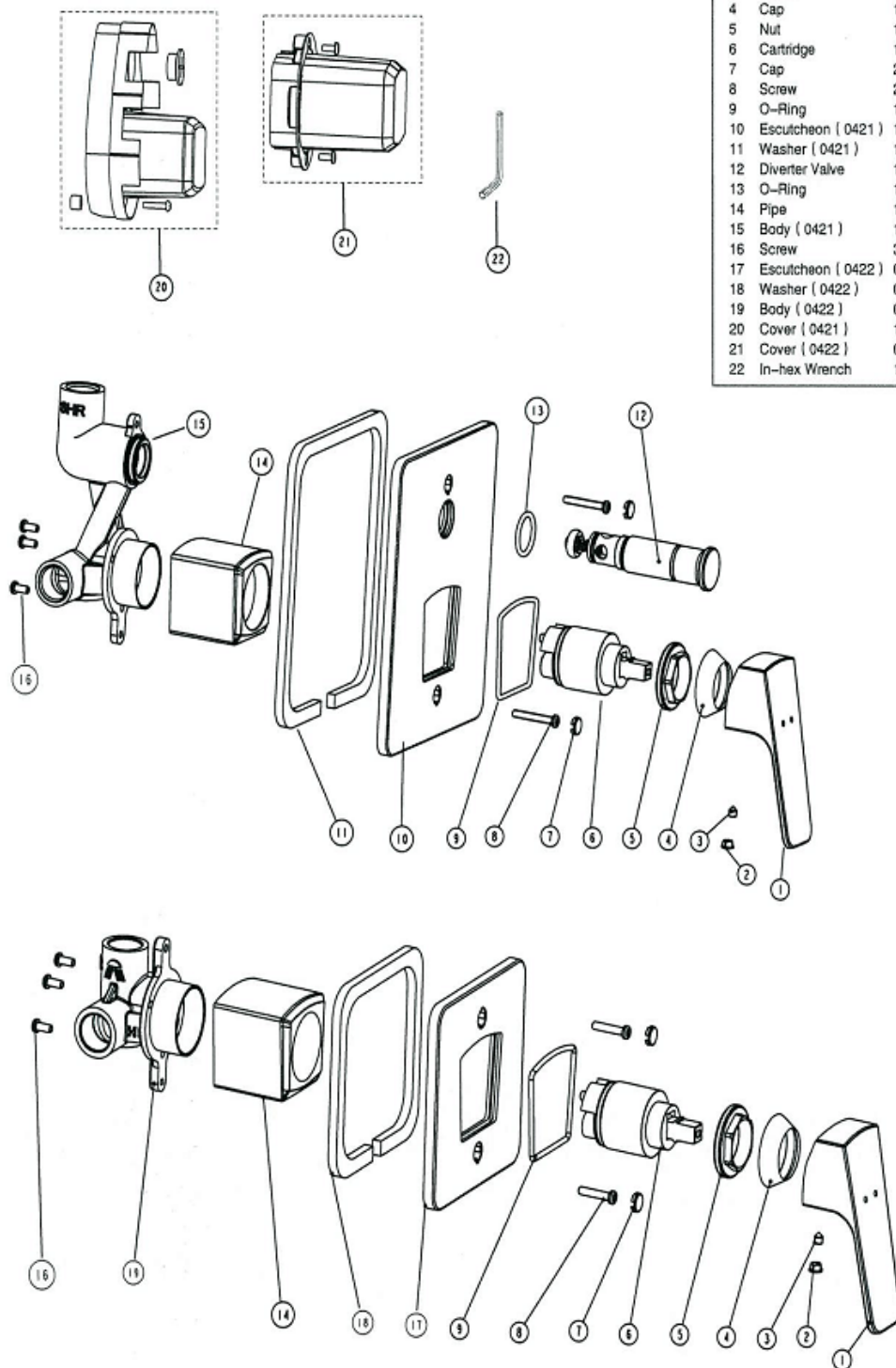
(WF-0422.709.50)





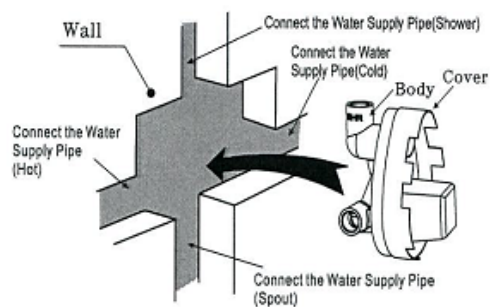
# Parts List

Parts List			
No.	Part Name	Q'ty	
		WF-0421 / WF-0422	
1	Handle	1	1
2	Index Button	1	1
3	Screw	1	1
4	Cap	1	1
5	Nut	1	1
6	Cartridge	1	1
7	Cap	2	2
8	Screw	2	2
9	O-Ring	1	1
10	Escutcheon ( 0421 )	1	0
11	Washer ( 0421 )	1	0
12	Diverter Valve	1	0
13	O-Ring	1	0
14	Pipe	1	1
15	Body ( 0421 )	1	0
16	Screw	3	3
17	Escutcheon ( 0422 )	0	1
18	Washer ( 0422 )	0	1
19	Body ( 0422 )	0	1
20	Cover ( 0421 )	1	0
21	Cover ( 0422 )	0	1
22	In-hex Wrench	1	1

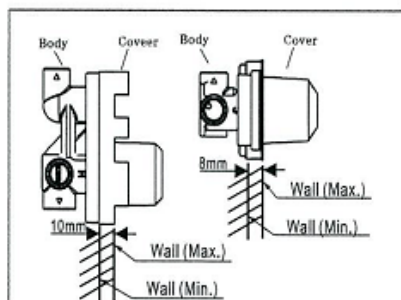


## Installation

### 1 Installing the Body

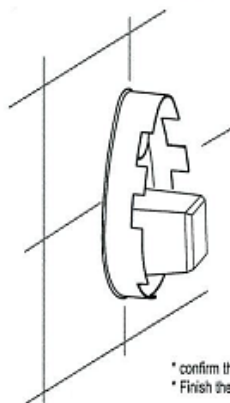


- \* Consult the dimension drawing and lay the pipes.
- \* Before installation, Wash and clean the water supply pipes.



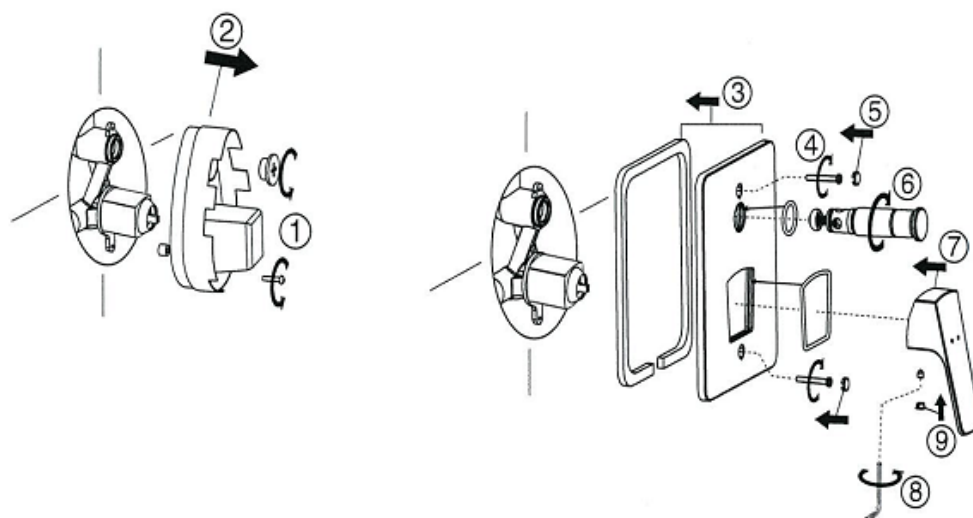
\* Finishing wall should be between the minimum and the maximum.

### 2 Finishing the Wall



- \* confirm there is no leakage in every connection.
- \* Finish the Wall

### 3 Installing the Escutcheon & Handle

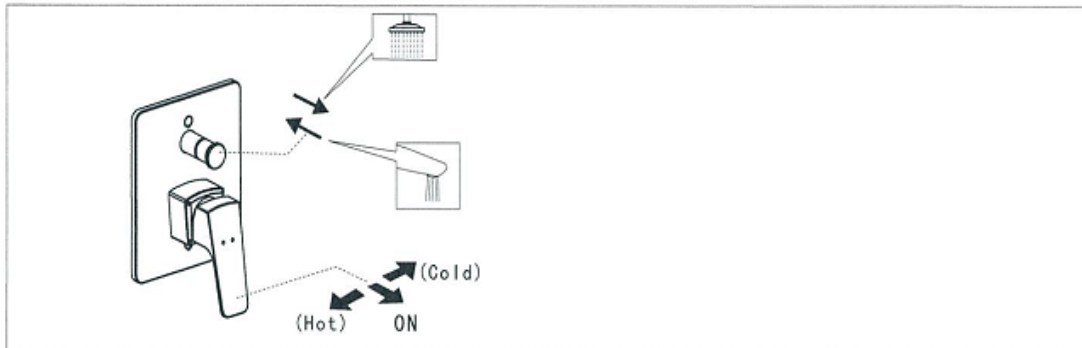


## Test / Usage

### 1 Test

- \* Move handle down into "OFF" position. Turn on supply angle valve to check all connections for leak.
- \* Operate handle up and down, left and right to flush water lines thoroughly.

### 2 Usage

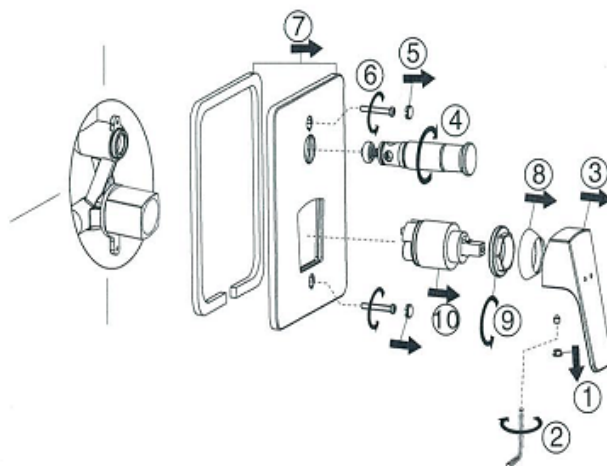


## Trouble Shooting Guide

Trouble	Checkpoint	Contents	Action
Poor flow rate	Aerator	Check any impurities.	Remove all impurities.
	Water supply valve	Check valve position.	Open it to full valve
	Flexible hose	Check if hose is twisted.	Untwist the hose.
Leakage	Cartridge packing	Check cartridge install.	When packing is damaged, replace the cartridge.
	Hose junction	Check the connection.	Check the existence of packing and wind it up sufficiently
Deviant Temperature	Supply Valve	Check if the water from Supply valve is enough or not	Increase water supply
	Supply system	Check if the supply pipe connected correct or not	Connect the hot and cold water pipe correctly

## Care & Maintenance

\* If you want to change the parts or clean the inner of faucet, please follow the steps in the above to remove the parts, then proceed the next steps.



**Attention:**  
Please leave the manual with the customer  
after installation is finished.